



### FLOWING WELL SEAL

SIZE : 6"  
MATERIAL : SS And CS  
Rubber Gasket



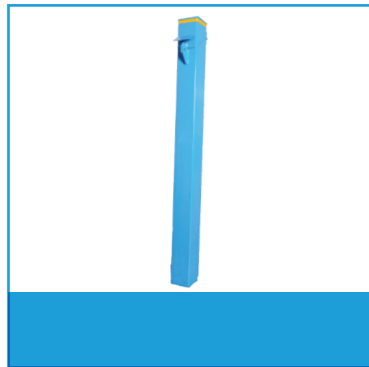
### WELL SEAL

SIZE : 6"  
MATERIAL : Aluminium  
Rubber Gasket



### MANHOLE

SIZE : 5" - 12"  
MATERIAL : Cast Iron, Aluminium  
Steel, AL and GALV Skirt  
LONG : 7 1/2" and 12" Long  
PAINT : White and Black



### CASING PROTECTOR

SIZE : 4" - 6"  
MATERIAL : Carbon Steel  
Round and Square pipe  
LONG : 4' and 5' ft Long pipe  
PAINT : As Customer Specified



### DRILL BIT

SIZE : 4 3/4", 6.5" and 6"  
MATERIAL : Alloy steel and  
Carbide Tips



### HAMMER

SIZE : 4.75"  
MATERIAL : Steel Assembly



### SONIC BIT

SIZE : 4"  
MATERIAL : Alloy Steel



### BRASS FITTINGS

SIZE : 0.75", 1" and 2"  
MATERIAL : Brass, NL



An ISO 9001:2015 Certified Company

# MANUFACTURE OF BORE-WELL DRILLING COMPONENTS



## APEX INDUSTRIES

Manufacturer of water well drilling products

### CANADA

#### APEX INDUSTRIES

📍 7234, Reindeer Drive  
Mississauga Ontario  
Canada - L4T 2M7  
☎ Ph: 705 719 0724, 586 248 1645  
✉ E-mail: bob@apexindustries.ca  
Web : www.apexindustries.ca

### INDIA

#### APEX INDUSTRIAL PRODUCTS PVT LIMITED

D16 & D17 GK Industrial Park  
Lalgudi Road, Siruganur,  
Trichy- 621 105  
Mobile: +91 95855 59036/ 95855 59037  
E-mail: sales3@apexindustries.ca  
Web : www.apexindustries.ca

# ABOUT OUR COMPANY

Apex Industrial Products Pvt Ltd initially started as Apex Industries in Barrie, Ontario, Canada at the year of 2003.

Apex industries was specialized in making water well products as well as vanes. We have been making customized water well products such as plugs, nipples, drive shoes, dual- rotary shoes, couplings and etc. Our products are both standardized and non-standardized (specialized) as per the end-users request. Our specialized water well products are made to fit into standardized device in the market. Customizations of designs on our products are an ongoing process as per the distributors and end-users inputs. We have our in-house Heat treatment facility to maintain better quality.



## QUALITY

Components are manufactured in ISO 9001:2015 certified facility.

Quality is our core area of focus, as we move ahead with expertise and commitment. From procurement of raw material, product design and manufacturing to the packaging and shipping of goods, our quality inspection regime encompasses every dimension of our operations.

We endeavour to supply superior quality and high precision products that meet or exceed global quality standards, which have earned the support of our clients.



### DRIVE SHOE

SIZE : 2" - 10"  
MATERIAL : Carbon Steel  
THREAD : "V" Thread  
LONG : As Customer Required  
PAINT : As Customer Specified



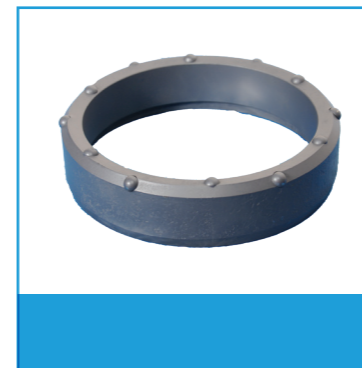
### CS COUPLING

SIZE : 4" - 10"  
MATERIAL : Carbon Steel  
THREAD : "V" & ROUND  
LONG : As Customer Required  
PAINT : As Customer Specified



### SS COUPLING

SIZE : 1" - 2"  
MATERIAL : Stainless Steel  
THREAD : "V" & ROUND  
LONG : As Customer Required  
PAINT : Polished SS



### DUAL ROTARY SHOE

SIZE : 4" - 24"  
MATERIAL : CS & Alloy Steel  
THREAD : No  
LONG : 2" Long  
PAINT : As Customer Specified



### NIPPLE

SIZE : 0.5" to 5"  
MATERIAL : SS And CS  
THREAD : "V" & ROUND  
LONG : As Customer Required



### PACKER

BI AND TRI SEAL RUBBER  
SIZE : 5"  
MATERIAL : SS And CS  
THREAD : Round  
LONG : 4.0" Long



### PLUG

SIZE : 5"  
MATERIAL : Carbon Steel  
THREAD : Round  
LONG : 4" Long



### WELD RING

SIZE : 4" - 10"  
MATERIAL : Carbon Steel  
THREAD : No  
LONG : 2" AND 3" Long



### WELL CAPS

SIZE : 6"  
MATERIAL : ALUMINIUM  
Rubber Gasket